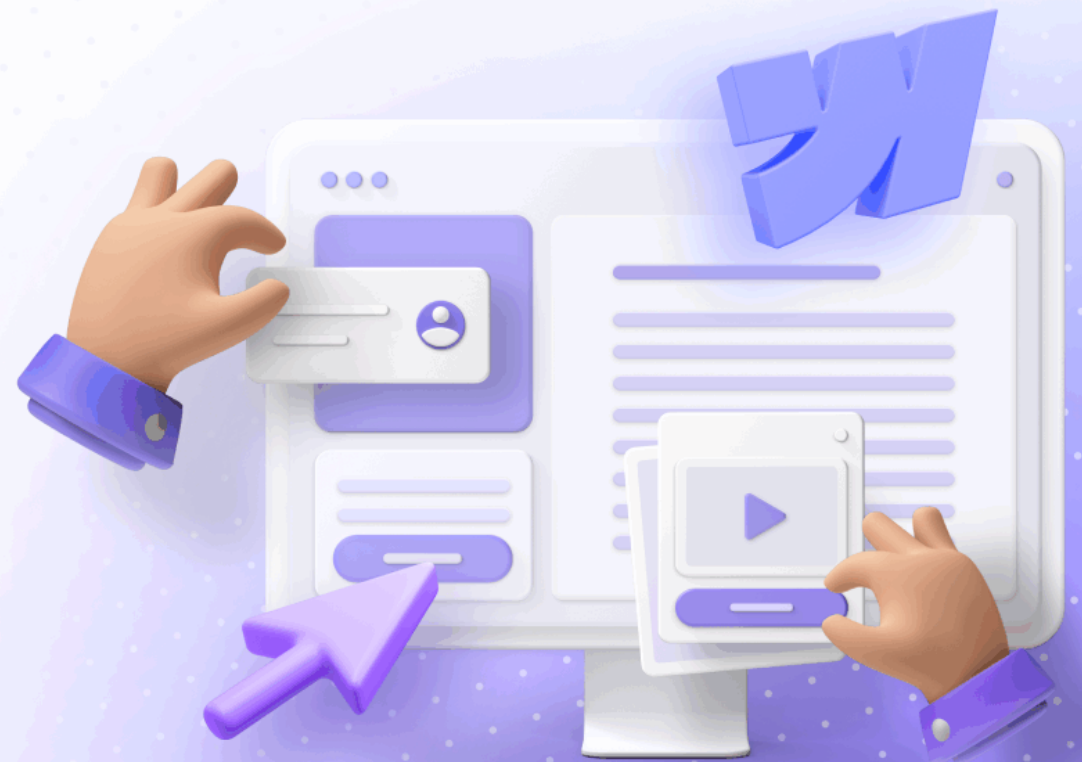


Confi-HealthHub

Experience contactless health monitoring that transforms any smartphone into a medical-grade scanner delivering vital insights.



Contents

01. Product Overview

Introduction to Confi-HealthHub's revolutionary smartphone-based health monitoring technology and capabilities.

02. Powerful Features

Comprehensive breakdown of advanced features including AI detection, digital records, and security.

03. Industry Applications

Real-world use cases across hospitals, insurance providers, and wellness organizations.

04. Pricing Plans

Flexible pricing options designed to meet diverse business needs and usage requirements.

Revolutionary Health Monitoring Technology



Transform any smartphone into a medical-grade scanner delivering real-time vital insights like SPO2, heart rate, and stress levels using advanced AI technology.

Contactless Health Monitoring

Confi-HealthHub revolutionizes healthcare by enabling contactless vital sign monitoring through smartphone cameras. Our AI-powered technology delivers medical-grade accuracy without requiring specialized hardware, making health monitoring accessible anytime, anywhere for patients and healthcare providers alike.

95%

Medical-grade accuracy for vital measurements.

0

Specialized hardware required for monitoring.

Advanced AI-Powered Health Detection

Camera-Based Vital Detection

Our advanced computer vision technology measures SPO2, heart rate, and stress levels using only your smartphone's front-facing camera, providing instant health insights.



Real-Time Monitoring

Get instant vital sign readings with AI-enhanced accuracy that rivals traditional medical equipment for continuous health assessment.



HIPAA Compliant Security

Complete privacy protection with full encryption, secure storage, and HIPAA-compliant data handling for peace of mind.



Comprehensive Health Management Platform



Secure digital health record management system.

Digital Health Records Hub

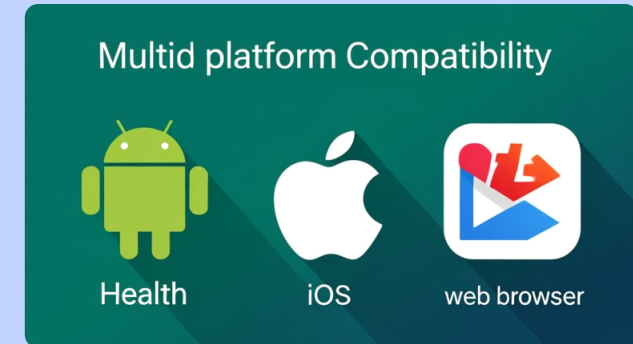
- Store and organize all medical reports securely.
- Access documents anywhere with cloud synchronization.
- Share reports easily with healthcare providers.



Advanced analytics for health trend monitoring.

Trend Tracking Analytics

- Monitor vital sign changes over time.
- Intuitive charts and visual health dashboards.
- Early detection of health pattern changes.



Universal accessibility across all devices.

Multi-Platform Accessibility

- Available on Android and iOS platforms.
- Web application for desktop access.
- Seamless data sync across all devices.

Industry Applications & Use Cases



Hospitals & Clinics

Enable pre-diagnosis and continuous patient monitoring remotely.

Reduce in-person visits while maintaining quality care standards.



Insurance Providers

Offer instant health assessments during policy applications.

Streamline claims processing with accurate health data.

Why Choose Confi-HealthHub

Transform Healthcare Delivery

Revolutionary AI-powered technology that eliminates hardware dependency while delivering medical-grade accuracy for comprehensive health monitoring solutions.



AI-Powered Vitals

Revolutionize telehealth with advanced AI algorithms that provide accurate vital sign measurements using smartphone technology.



Software-Driven Care

Reduce hardware dependency with innovative software solutions that transform any smartphone into medical equipment.



Preventive Healthcare

Empower preventive healthcare by providing early health alerts and continuous monitoring for better patient outcomes.

Flexible Pricing Plans

₹20K

Standard Plan

Standard Package

Perfect for small healthcare practices and individual providers starting their digital transformation journey.

- Up to 1,000 users monthly access.
- Basic vital sign monitoring capabilities.
- Standard customer support and documentation.

₹50K

Professional Plan

Professional Package

Ideal for growing medical practices requiring advanced analytics and comprehensive health management tools.

- Up to 5,000 users with full access.
- Advanced analytics dashboard and reporting features.
- Priority support with dedicated account management.

1000+

Standard Users

Enterprise Package

Comprehensive solution for large healthcare systems requiring unlimited access and custom integration capabilities.

- Unlimited users with complete platform access.
- Full API integration and white-labeling options.
- Custom pricing and dedicated technical support.

Custom

Enterprise Pricing

Ready to Transform Healthcare



Start Free Trial

Experience the power of Confi-HealthHub with our comprehensive free trial. Test all features and see how our AI-powered technology can transform your healthcare delivery.

Schedule Live Demo

Book a personalized demonstration with our healthcare technology experts. See real-time vital sign detection and explore how Confi-HealthHub fits your specific needs.

Thank You

ConfAI by Confitech Solutions - Transforming Healthcare Through Innovation